

PRODUCT CATALOGUE

3rd Edition



CONTENT

INTRODUCTION

1

01

WELDING

2 - 21

02

CUTTING

22 - 30

03

LASER

31 - 37

04

ACCESSORIES & VENTILATION

38 - 56



ABOUT US

At the heart of our brand story lies the essence of British industrial heritage. The fusion of British heritage green and orange maroon encompasses our cultural roots and the fiery industrial spirit. It harks back to the Industrial Revolution's birth in Great Britain, fueling our passion for innovation. Racing green heritage symbolizes class, pace and excellence, while maroon orange ignites the senses with the blood, fire, and sweat that epitomize engineering greatness. Above all, our brand embraces the buoyant spirit of revolution, channeling smart engineering ideals to understand and cater to the unique needs of every client.

Explore our products, witness our demos, and rely on our dedicated service centers.

DO WELD, MASTER WELL



VELOCE



ARC200DC SMAW/ MMA WELDING MACHINE



AS00820
VELOCE ARC 200 DC
110V/220V 1PH

ARC200DC SMAW/ MMA WELDING MACHINE



Features:

- Cellulosic electrode E6011 capability
- Professional quality IGBT Inverter
- Anti-stick, arc force, Lift TIG
- Single PCB, compact size, lightweight
- Easy arc starting, minimal spatter
- Auto-compensation for voltage fluctuation

Digital panel for clear visibility of welding parameters

Dual voltage of 110V or 230V 50/60Hz

Precise machine calibration for optimal welding results



Package Includes:

300A Electrode Holder,
300A Earth Clamp with 3m Weld and Return Cable.

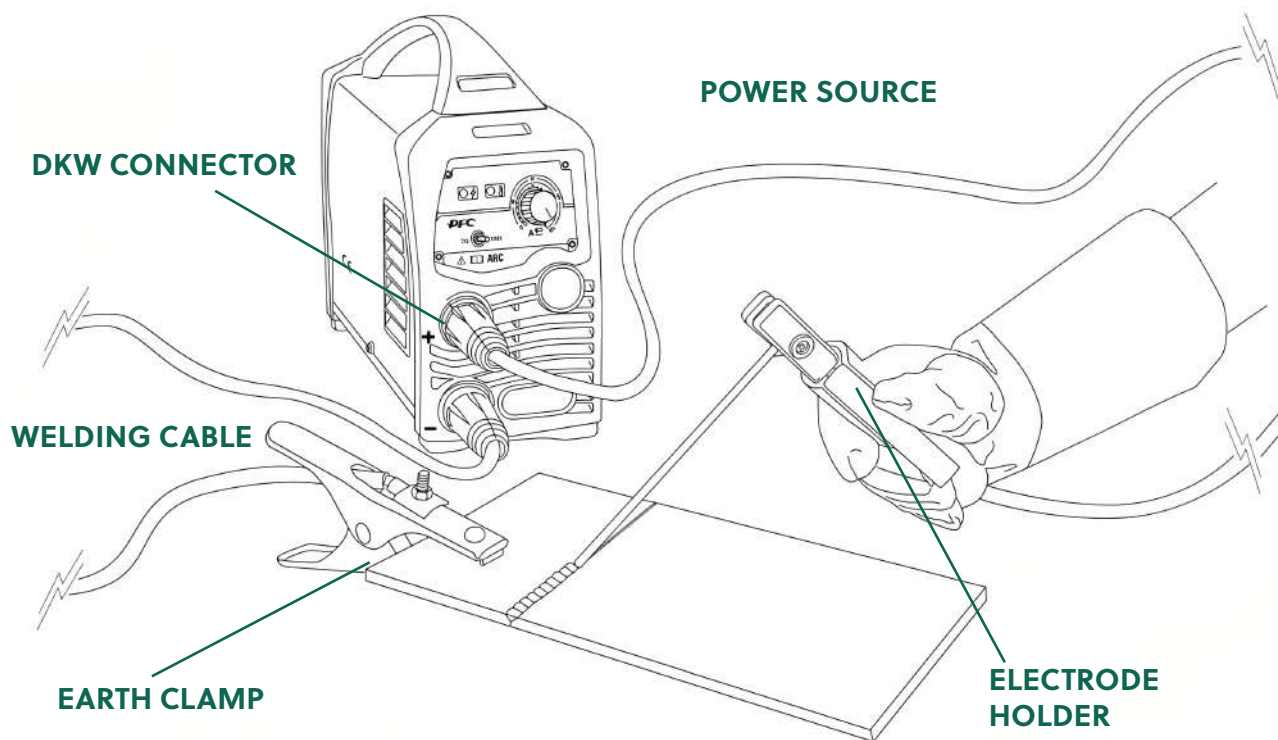


Stock Code	AS00820	
Model No.	ARC 200 DC	
Input Power Source	1~AC110V±15% 50/60 Hz	1~AC220V±15% 50/60 Hz
Rated Input Current	54.7 A	42.7 A
Rated Input Power Capacity	6 kVA	9.7 kVA
Output Current Range	20-140 A	20-200 A
No-Load Voltage	85 V	
Rated Duty Cycle @40°C	25%	
Efficiency	85%	
Power Factor	0.7 cosφ	
Protection Class	IP21S	
Insulation Class	F	
Dimensions (mm)	381 x 138 x 286	
Weight	6.8 kg	

ARC200DC SMAW/ MMA WELDING MACHINE

Optional Accessories:

Stock Code	Description
AS00900	Electrode Holder WSA-300A
AS00901	Earth Clamp 300A
AS00116	300A Neoprene Welding Cable (25mm ² x 3m)
AS00941	Female Receptacle 50-70mm ²
AS00903	DKW Connector (Male)
AS00906	WP-17V TIG Torch Valve 4M Air Cooled



ARC400 SMAW/ MMA WELDING MACHINE



Package Includes:

500A Electrode Holder,
500A Earth Clamp with 3m Weld and
Return Cable.

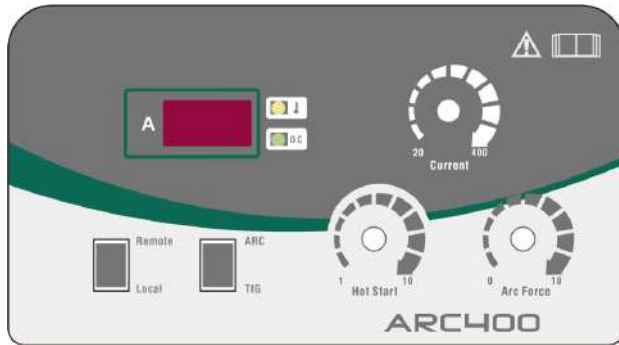
AS00821
VELOCE ARC 400
400V 3PH

ARC400DC SMAW/ MMA WELDING MACHINE



Features:

- IGBT module inverter technology
- Easy and simple operation panel
- Excellent welding quality, optimum arc dynamic characteristics
- Suitable for all acid, basic, stainless, low hydrogen electrodes
- Cellulosic electrode capability
- Lift-arc TIG
- O.C. & O.H. protection
- Hot start



Optional Accessories:

Stock Code	Description
AS00904	Electrode Holder WSA-500A
AS00905	Earth Clamp 500A
AS00117	400A Neoprene Welding Cable (50mm ² x 3m)
AS00941	Female Receptacle 50-70mm ²
AS00903	DKW35-50 Connector (male)
AS00906	WP-17V TIG Torch Valve 4M Air Cooled

Compatible with generators

Machine's stable welding performance provides consistent power output, preventing quality issues, unstable arcs, and machine malfunctions

Built for heavy duty SMAW/MMA welding

Stock Code	AS00821
Model No.	ARC 400
Input Power Source	3~AC380V+15% 50/60 Hz
Rated Input Current	28 A
Rated Input Power Capacity	18.2 kVA
Output Current Range	20-400 A
Arc-Force Range	0-100 A
Hot start range	0-200 A
Rated No-Load Voltage	65 V
Power Factor	0.93 cosφ
Rated Duty Cycle @40°C	60%
Efficiency	85%
Protection Class	IP21S
Insulation Class	F
Dimensions (mm)	618 x 330 x 441
Weight	19 kg

TIG 200P GTAW/TIG WELDING MACHINE



AS00822
VELOCE TIG 200DC
PULSE 96-265V 1PH

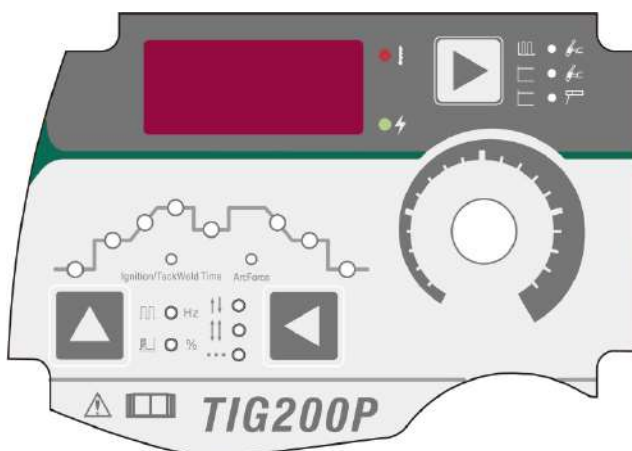
TIG 200P GTAW/TIG WELDING MACHINE

Features:

- Excellent performance with Pulse TIG, specially for thin material welding
- Technology: AC95-265V input voltage power factor higher than 0.99, energy saving
- Digital control, MCU technology, automatic parameter saving
- Good arc stiffness and heat concentration
- Stable arc, good shaping and less deformation
- Suitable for welding materials such as steel, stainless steel, titanium, copper, nickel and their alloys
- Applicable in vessel, bike, decoration, outdoor advertising, etc

Package Includes:

4m WP-26 HF TIG Torch,
300A Earth Clamp with 3m Weld and Return Cable.



Pulse welding prevents burn-through on plates (<3mm) to provide proper weld penetration

PFC technology minimizes voltage drop measured at end of the torch



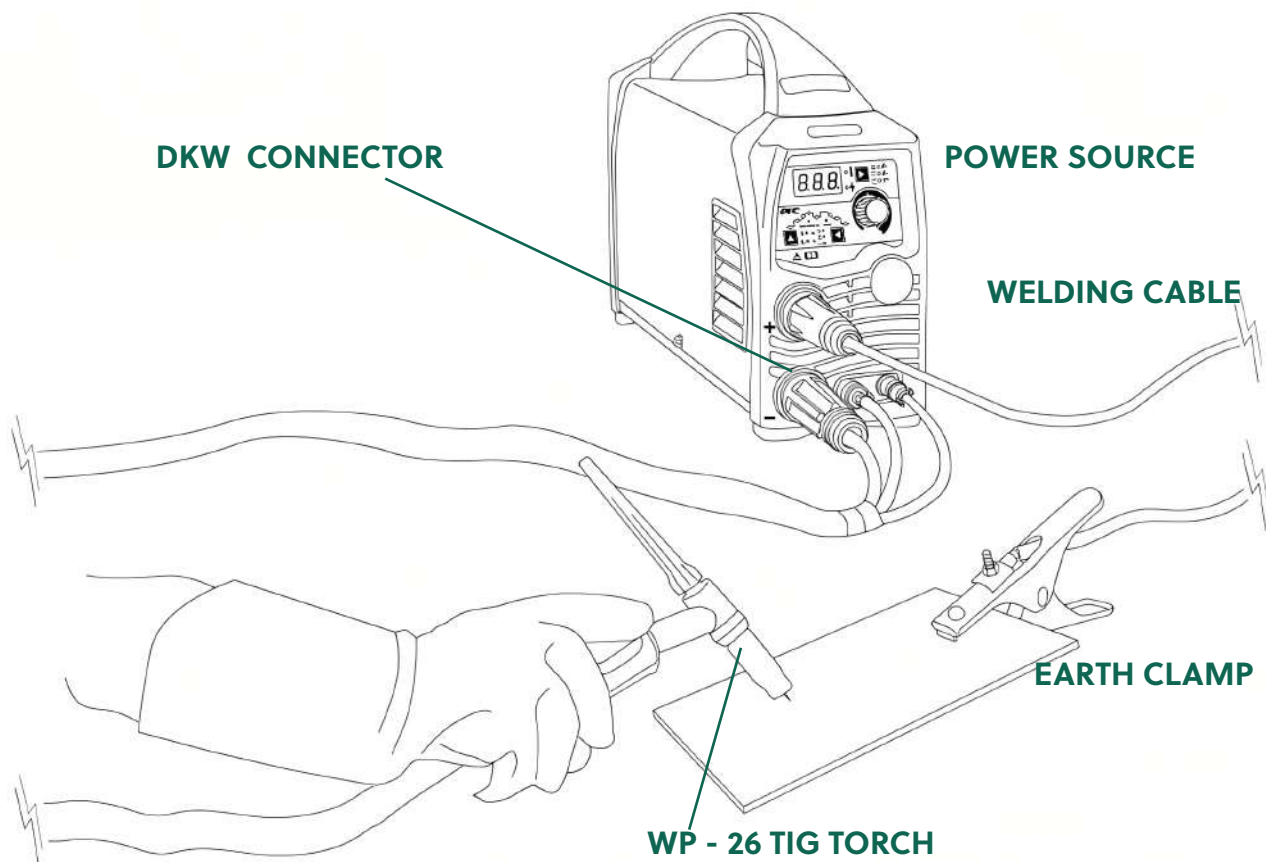
Prevents welding defects or insufficient penetration

Stock Code	AS00822	
Model No.	TIG 200 DC	
Input Power Source	1~AC110V ±15% 50/60 Hz	1~AC220V ±15% 50/60 Hz
Rated Input Current	27.8 A	18.7 A
Rated Input Power Capacity	3.2 kVA	4.3 kVA
Tig Output Current Range	10-160 A	10-180 A
MMA Output Current Range	10-120 A	10-200 A
Pre/Post-Flow-time	0-15s	
Up/Downslope	0-10s	
Arc Starting	HF	
No-Load Voltage	65 V	
Rated Duty Cycle @40°C	35%	30%
Efficiency	85%	85%
Power Factor	0.99 cosφ	0.99 cosφ
Protection Class	IP21S	
Insulation Class	F	
Dimensions (mm)	420 x 135 x 235	
Weight	7.5 kg	

TIG 200P GTAW/TIG WELDING MACHINE

Optional Accessories:

Stock Code	Description
AS00906	4M WP-26 TIG Torch
AS00901	Earth Clamp 300A
AS02117	ESAB Tungsten WL15 2.4 x 175 mm Gold
AS00941	Female Receptacle 50-70mm ²
AS00903	DKW35-50 Connector (Male)
AS00908	Gas Quick Female Connector
AS00909	Back Cup Long
AS00910	Collet 1.6mm
AS00911	Collet 2.0mm
AS00912	Collet 2.4mm
AS00913	Collet Body 1.6mm
AS00914	Collet Body 2.0mm
AS00915	Collet Body 2.4mm



TIG 200P AC/DC WELDING MACHINE

Features:

- Inverter IGBT
- Automatic parameter saving
- AC TIG for aluminium and magnesium welding
- Digital control, MCU technology, multi-function for precision welding
- Real time display of welding current
- Excellent performance with Pulse TIG, especially for thin material welding
- Good arc stiffness and concentrated heat
- Stable arc without spatter, good shaping and less deformation
- Suitable for welding materials such as steel, stainless steel, titanium, copper, nickel and their alloys
- Applicable in vessel, bike, decoration, outdoor advertising, etc



Package Includes:

4m IOW6972-20 180A/DC TIG Torch
300A Earth Clamp with 3m Return
Cable

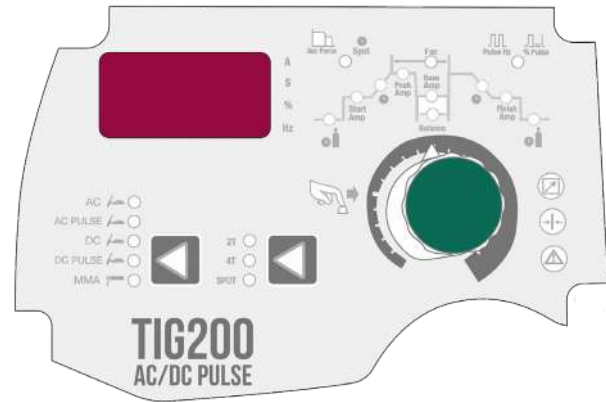
AS00823
VELOCE TIG 200P AC/DC
WELDING MACHINE

TIG 200P AC/DC WELDING MACHINE



AC current required for aluminium and magnesium alloy

Versatile welding capabilities for all metals



Optional Accessories:

Stock Code	Description
AS00946	4m IOW6972-20 180A/DC TIG Torch
AS00901	Earth Clamp 300A
AS02117	ESAB Tungsten WL15 2.4 x 175mm Gold
AS00941	Female Receptacle 50-70mm ²
AS00903	DKW35-50 Connector (Male)
AS00908	Gas Quick Female Connector
AS00909	Back Cup Long
AS00910	Collet 1.6mm
AS00911	Collet 2.0mm
AS00912	Collet 2.4mm
AS00913	Collet Body 1.6mm
AS00914	Collet Body 2.0mm
AS00915	Collet Body 2.4mm

Specifications:

Standard	Optional
HF	Anti-stick
MMA	VRD
AC TIG	Pedal remote control
AC Pulse TIG	
DC Pulse TIG	
Built-in hot start	
Automatic saving of parameters	
O.H. & O.C. indicator	
Digital display meter	
2T/4T/Spot	

Stock Code	AS00823
Model No.	TIG200P AC/DC
Input Power Source	1~AC230V±15% 50/60 Hz
Rated Input Current	31A
Rated Input Power Capacity	71 kVA
TIG Output Current Range	5-200A
MMA Output Current Range	10-160A
Pre-flow Time	0.1 - 10.0s
Post-flow Time	0.5 - 15.0s
Up/Down Slope	0 - 15s
AC Balance	15 - 85%
Arc Starting	HF
AC Frequency	20-250
Pulse Frequency	0.2 - 200
No-Load Voltage	56V
Rated Duty Cycle @40°C	25%
Efficiency	85%
Power Factor	0.7 cosφ
Protection class	IP21S
Insulation Class	B
Dimensions (mm)	426 x 162 x 277
Weight	9 kg

TIG 400P GTAW/TIG WELDING MACHINE

Features:

- Digital welding circuit design ensures refined welding performance
- Adoption of digital circuit control enables refined, quality welding bead
- Digital welding circuit design ensures refined welding performance. Min. 5A current for 0.5mm thin plates. Extremely excellent welding performance when under pulse mode
- Three proofing designs to satisfy extremely harsh working environment

Package Includes:

8M WP - 26 Air Cooled TIG Torch, 300A Earth Clamp with 3m Return Cable.

Applications:

Suitable for carbon steel, stainless steel, alloy steel, copper, titanium and titanium alloy; wide application in shipbuilding, pressure vessel, automobile, oilfield construction, chemical construction, steel structure, outdoor decoration, outdoor advertising, etc.



AS00824
 VELOCE TIG 400 PUSLE
 400V 3PH AIR COOLED

TIG 400P GTAW/TIG WELDING MACHINE



Seamless connectivity with robotic arms and automated equipment

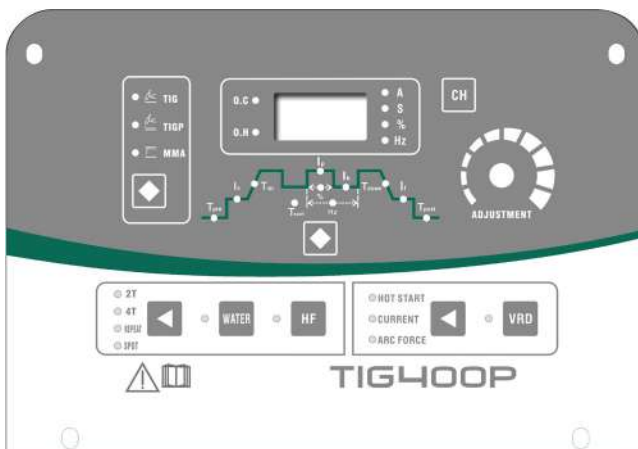
During high amperage operations, water cooling capabilities and functions will prevent torch from being overheated

Contributes to optimal performance and durability

Optional Accessories:

Stock Code	Description
AS00824-A	Pedal Control Unit for TIG 400
AS00824-B	Remote Control Box For TIG 400
AS00824-D	Water Tank 6.5L For TIG 400
AS00824-E	Trolley For TIG 400
AS00945	5m WP-18 Water-Cooled TIG Torch
AS00906-1	8M WP - 26 Air Cooled TIG Torch

Stock Code	AS00824
Model No.	TIG 400P
Input Power Source	3~AC380V ±15% 50/60 Hz
Rated Input Current	25.3 A
Rated Input Power Capacity	18 kVA
Power Factor	0.9 cosφ
No-load Voltage	68 V
Rated Output	400/36 A/V
Rated Duty Cycle @40°C	50%
Welding Current	5-400 A
Arc Force Range	0-200 A
Arc Start Range	0-200 A
Pre-Flow Time	0.2 - 10.0s
Initial Current	5-400 A
Pilot Arc Current	5-400 A
Up/Down-Slope Time	0-10s
Background Current	5-400 A
Peak Current	5-400 A
Post-Flow Time	2-15s
Pulse Frequency Range	0.2 - 200.0 Hz
Pulse Duty Factor	10-90 %
Efficiency	85%
Protection Class	IP21S
Dimension (mm)	760 x 360 x 585
Weight	32 kg



Specifications:

Standard
HF TIG/Lift-TIG/MMA
2T/4T, repeat, spot welding
Remote control
Voltage Reduction Device
Intelligent control on cooling fan and water tank
Module-design for trolley, water tank and power source
Optional
Water flow switch interface

MIG 500 MIG/MAG WELDING MACHINE



Features:

- Brand new digital control system with 32-bit efficient processor
- Operate within $\pm 20\%$ of work voltage
- Equipped with intelligent-control fan system and sealed air passage
- Water-proof, dust-proof and corrosion-proof

Applications:

Suitable for normal low carbon steel, stainless steel (thickness $\geq 1\text{mm}$), wide application in shipbuilding, steels structure, petroleum chemical industry, automobile, open field construction, etc.

AS00825

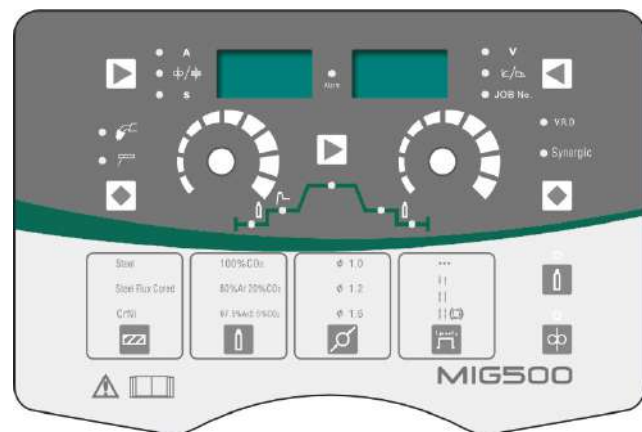
VELOCE MIG 500 C/W WIRE FEEDER &
OPTIONAL TROLLEY AS00826
(GAS TANK EXCLUDED)

MIG 500 MIG/MAG WELDING MACHINE



Synergic database to assist welders for quick parameters setting

Adaptive to 20 different welding memories for different welders



Package Includes:

Wire Feeder (With Wheels), 3m WK-36KD MIG Torch, 500A Earth Clamp with 3m Return Cable.

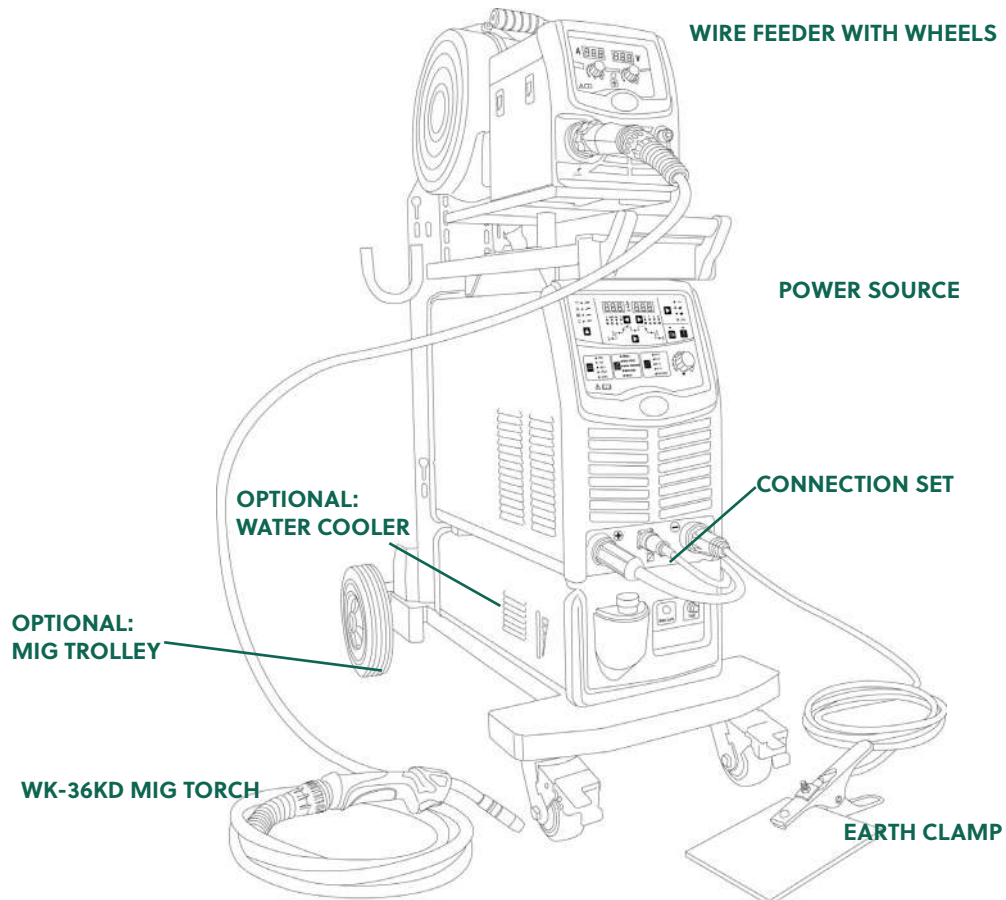
Stock Code	AS00825
Model No.	MIG 500
Input Power Source	3~AC380V ±15%
Rated Input Current	40.6 A
Rated Input Power Capacity	24.2 kVA
Power Factor	0.92 cosφ
No-Load Voltage	80 V
Rated Output	500/39 A/V
Welding Voltage	10-50 V
Welding Current Range	30-500 A
Wire Speed	2.0-22 m/min
Output Characteristics	MMA:CC MIG/MAG:CV
Rated Duty Cycle @40°C	50%
Efficiency	91%
Protection Class	IP23
Insulation Class	F
Dimensions (mm)	785 x 330 x 666
Weight (Kg)	59 kg

Stock Code	Wear Parts Description
AS00925	Nozzle (Narrow) ø16mm For WK-36KD
AS00927	Contact Tip M8 x 10 x 30 1.0mm For WK-36KD
AS00928	Contact Tip M8 x 10 x 30 1.2mm For WK-36KD
AS00929	Contact Tip M8 x 10 x 30 1.6mm For WK-36KD
AS00930	Contact tip Holder M8 For WK-36KD
AS00932	Swan Neck For WK-36KD
AS00934	Torch Connector Euro For WK-36KD
AS00942	Female Receptacle 70-95 mm ²
AS00920	1.2-1.6(V) Wire Feeding Roller
AS00936	Steel Liner 3.5m 1.2 - 1.6mm
AS00937	Steel Liner 5.5m 1.2 - 1.6mm
AS00938	Teflon Liner For Aluminium Wire 3.2m 1.0 - 1.2mm
AS00939	Teflon Liner For Aluminium Wire 4.2m 1.0 - 1.2mm
AS00916-4	Gas Diffuser For WK-36KD MIG Torch

MIG 500 MIG/MAG WELDING MACHINE

Optional Accessories:

Stock Code	Description
AS00940	Wire Feeder (with wheels)
AS00827	Connection Set 25m 70mm ² with Cable Cover
AS00828	Connection Set 15m 70mm ² with Cable Cover
AS00828-W	Connection Set 15m 70mm ² with Cable Cover (water cooled)
AS00830	Connection Set 30m 70mm ² with Cable Cover
AS00830-W	Connection Set 30m 70mm ² with Cable Cover (water cooled)
AS00916	WK-36KD MIG Torch 3M
AS00922	WK-36KD MIG Torch 4M
AS00923	WK-36KD MIG Torch 5M
AS00924	WK - 36KD MIG Torch 4M (water cooled)
AS00905	Earth Clamp 500A
AS00917	DKW 70 - 95mm ² CONNECTOR
AS00829	CO2 Regulator Fin Type
AS00921	8m Cover For Cable
AS00831	MIG 500 Water Cooler 5L
AS00826	Veloce MIG Trolley



MIG500P MULTI-PROCESS PULSE WELDING SYSTEM



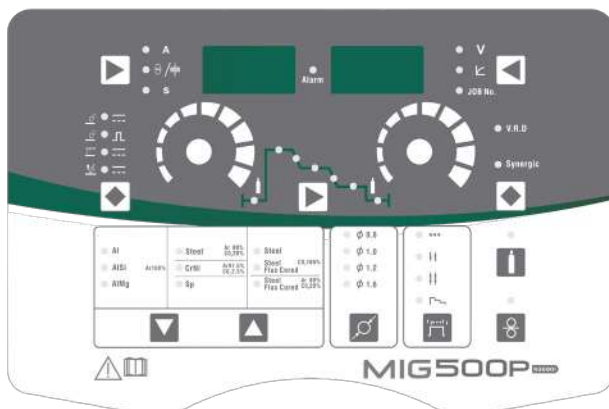
AS00831

VELOCE MIG 500P MULTI-PROCESS
PULSE WELDING SYSTEM

MIG500P MULTI-PROCESS PULSE WELDING SYSTEM

Features:

- CANBus Interface synchronizes parameter settings between wire feeder & power source capability to pair with automation systems
- Expert-level synergic welding database covers most job scenarios 20 memory slots for saving customized parameter settings
- High precision waveform management consistent pulse output unified and stable droplet formation
- Strong penetration consistent arcing and crater formation
- Comprehensive digital control panel interchangeable metric british system display
- Built-in sensors monitor output current and internal temperature in real time
- Improves energy efficiency and reduces stand-by noise level



**Multi-process welding function:
MMA/TIG/MIG/MIG PULSE**

**Possesses industrial leader
CANBus system for machine-to-
machine communication**

Stock Code	AS00831
Model No.	MIG500P
Power Supply	3Phase AC380V±20% 50 Hz
Rated Input	26.7 kVA
Power Factor	0.9
Rated OCV	86V
V.R.D	Tick
MMA, TIG Rated VRD	15 V
MIG rated max output	500A / 39V
MMA rated max output	500A / 40V
TIG rated max output	500 A / 30V
Welding Voltage	10-50 V
Welding Current	30-500 A
Wire Feed Speed	1.5 - 23.0 m/min
Output Characteristics	MMA & TIG : CC MIG / MAG : CV
Working Temperature	-10 ~ +40°C
Storage Temperature	-25 ~ +55°C
IP Class	IP23
Cooling Type	Air-Cooled
Rated Duty Circle	50%
Efficiency	91%
Dimension (L x W x H)	758 x 330 x 66 mm
Weight	59 kg

TIG TORCH & WEAR PARTS



TIG TORCH

Stock Code	Model
AS00906	WP-26 4M Air Cooled
AS00906-1	WP-26 8M Air Cooled
AS00945	WP-18M Water Cooled

1 BACK CAP FOR TIG TORCH

Stock Code	Model
AS00909	Long

2 TIG TORCH BODY

Stock Code	Model
AS00148	150AMP
AS00149	200AMP

3 COLLET FOR TIG TORCH

Stock Code	Size
AS00910	1.6 mm
AS00911	2.0 mm
AS00912	2.4 mm

4 COLLET BODY FOR TIG TORCH

Stock Code	Size
AS00913	1.6 mm
AS00914	2.0 mm
AS00915	2.4 mm

5 TIG TORCH CERAMIC CUP

Stock Code	Size	Stock Code	Size
AS00950	10N50 4	AS00953	10N47 7
AS00951	10N49 5	AS00954	10N46 8
AS00952	10N48 6	AS00955	10N45 10



MIG TORCH & WEAR PARTS



WK - 36KD MIG TORCH

Stock Code	Model
AS00916	3M Air Cooled
AS00922	4M Air Cooled
AS00923	5M Air Cooled
AS00924	4M Water Cooled

*EURO CONNECTOR

1 GAS NOZZLE

Stock Code	Size	Model
AS00925	16mm	WK-36KD

2 CONTACT TIP M8 x 10 x 30

Stock Code	Size
AS00927	1.0 mm
AS00928	1.2 mm
AS00929	1.6 mm

3 CONTACT TIP HOLDER

Stock Code	Model
AS00930	WK-36KD

4 GAS DIFFUSER

Stock Code	Model
AS00916-4	WK-36KD

5 SWAN NECK

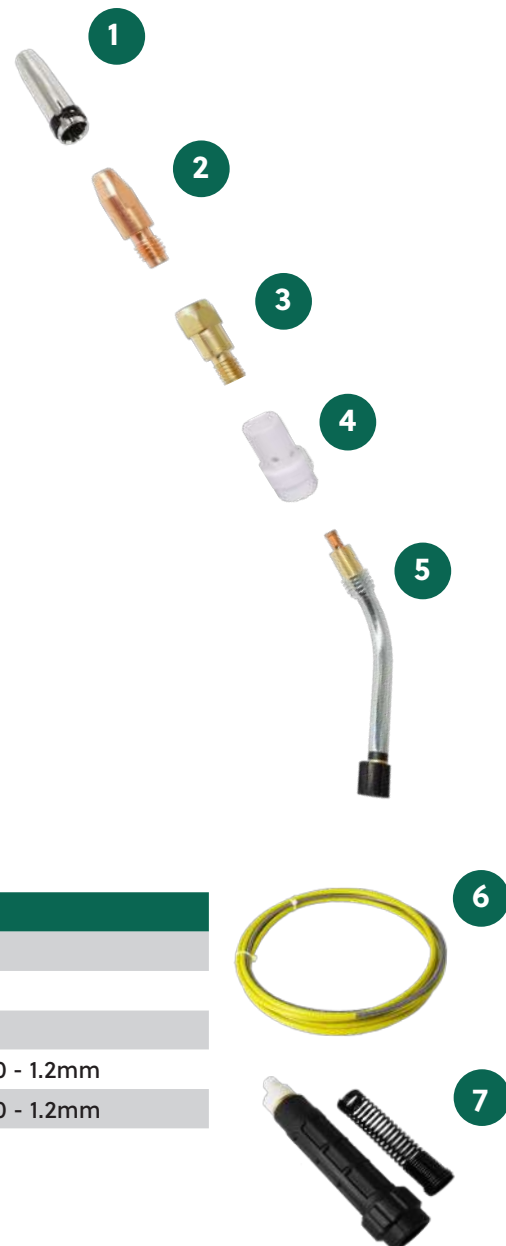
Stock Code	Model
AS00932	WK-36KD

6 MIG TORCH LINER

Stock Code	Size (M)
AS00935	Steel Liner 3.0M 1.0mm
AS00936	Steel Liner 3.5M 1.2 - 1.6mm
AS00937	Steel Liner 5.5M 1.2 - 1.6mm
AS00938	Teflon Liner for Aluminium Wire 3.2M 1.0 - 1.2mm
AS00939	Teflon Liner for Aluminium Wire 4.2M 1.0 - 1.2mm

7 TORCH CONNECTOR

Stock Code	Model
AS00934	WK-36KD EURO



TAGLIO



PLASMA CUTTER



Package Includes:

CUT-40

1 Unit of 5M JG40 (PT31) Torch, Set of 300A Earth Clamp, 10mm² x 3m Cable, and Quick Plus

CUT-60

1 Unit of 5M P80 Torch, Set of 300A Earth Clamp, 10mm² x 3m Cable, and Quick Plus

AS01000
CUT40 PLASMA CUTTER

CUT 40 & CUT 60 PLASMA CUTTER

Features:

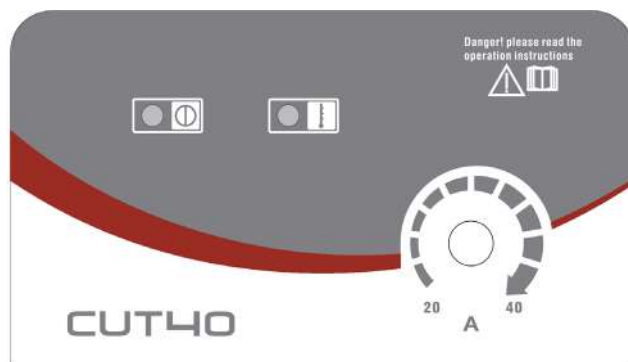
- INVERTER IGBT
- Pilot arc start increases cutting efficiency
- Conveniently and quickly cut metal plate
- HF is available for easy arc ignition
- Pre/Post flow
- 2T/4T (Optional for CUT40)
- Pilot Arc (Not avail. for CUT40)
- O.H. & O.C. protection
- Euro connector (Not avail. for CUT40)



Smooth cutting surface, high cutting speed

Suitable for stainless steel, copper, cast iron and aluminum, and more

Stock Code	AS01000	AS01050
Model	CUT40	CUT60
Input power source	1~AC230V±15% 50/60Hz	3~AC380V±15% 50/60Hz
Rated input current	32.6A	11.4A
Rated input power capacity	7.5KVA	7.9KVA
Output current range	20-40A	20-60A
Post-flow time	10s	
Arc starting	HF-touch	HF-touch
No-load volatge	310V	290V
Rated duty cycle	40% @ 40°C	40% @ 40°C
Quality cutting thickness	8mm	16mm
Efficiency	85%	
Power factor	0.6 cosφ	0.9 cosφ
Protection class	IP21S	
Insulation class	F	
Dimensions (mm)	415 x 155 x 315	540 x 250 x 380
Weight	7.8KG	14.5KG



Optional Accessories:

Stock Code	Description
AS01001	1 Unit of 5M JG40 (PT31) Torch (for CUT40 only)
AS01002	1 Unit of 5M P80 Torch (for CUT60)
AS01011	Set of 300A Earth Clamp + 10mm ² x 3m Cable + Quick Plus (for both CUT 40 & CUT60)



4-IN-1 PLASMA CUTTER WITH INTEGRATED AIR COMPRESSOR



AS01020

4-IN-1 PLASMA CUTTER WITH INTEGRATED
AIR COMPRESSOR

4-IN-1 PLASMA CUTTER W INTEGRATED AIR COMPRESOR

Features:

- Modular & ergonomic design for easy maintenance and good portability
- Retractable handles for easy storage
- Handy accessory storage good for keeping frequently-used accessories
- Large size trailer wheels for easily pass-through different job site terrain
- Rubber bottom pillars to keep machine from drifting when integrated air compressor works



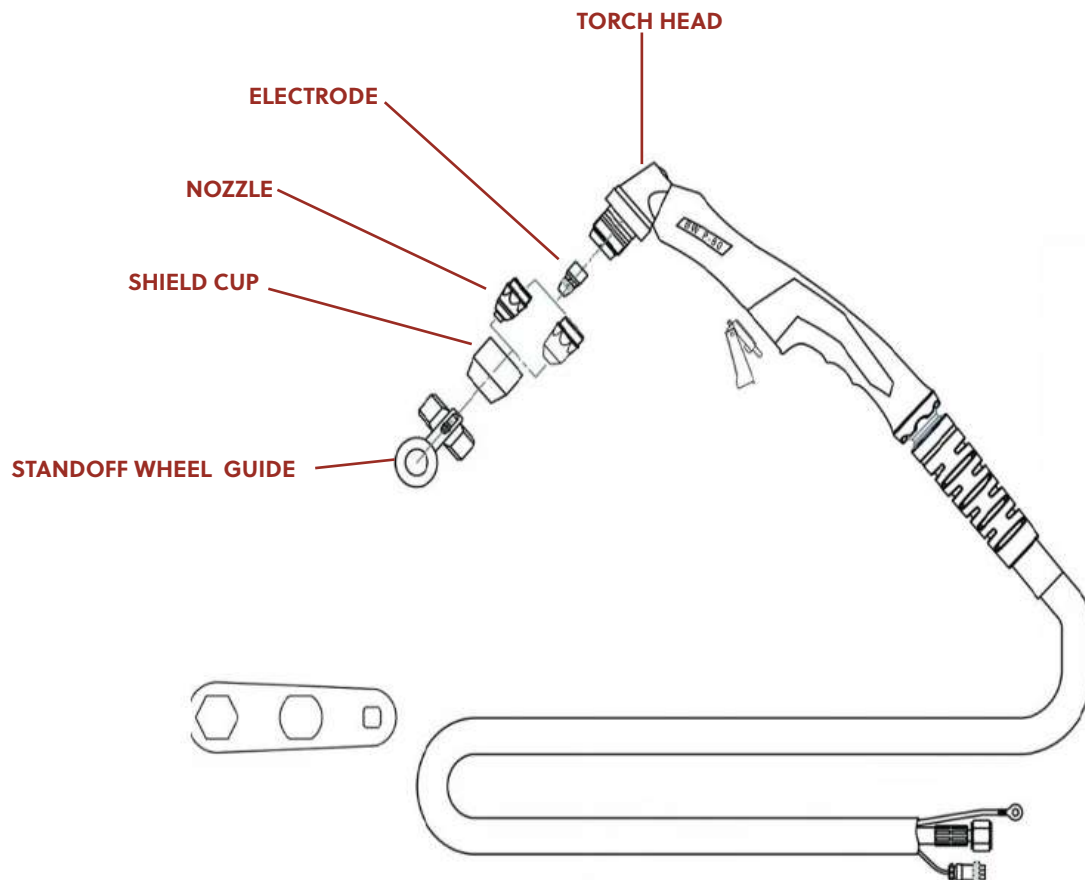
Stock Code	AS01020		AS01030
Model	CUT-80 COM/D		CUT-100 COM
Input power	1PH AC220V±15%	3PH AC380V±15%	3PH AC380V±15%
Rated input capacity	7.5 kVA	10 kVA	15 kVA
CUT no-load voltage	310 V	280 V	296 V
MMA no-load voltage	70 V	63 V	78 V
Cutting current range	20-45 A	20-60 A	20-80 A
MMA current range	50-160 A	50-200 A	50-250 A
Quality cut thickness	10mm	15mm	20mm
Max. cut thickness	15mm	30mm	35mm
Rated duty cycle	30% @ 40°C	30% @ 40°C	30% @ 40°C
Efficiency	≥85%	≥85%	≥85%
Power factor	≥0.7	≥0.7	≥0.7
Weight	43 kg	43kg	45 kg
Dimensions (mm)	607 x 649 x 580	607 x 649 x 580	607 x 649 x 580

Package Includes:

Stock Code	Description
AS01002	1 Unit of 5M P80 torch (for both CUT-80 COM/D & CUT-100 COM)
AS01011	1 Set of 300A Earth Clamp + 10mm ² x 3m Cable

P80 PLASMA CUTTING TORCH & WEAR PARTS

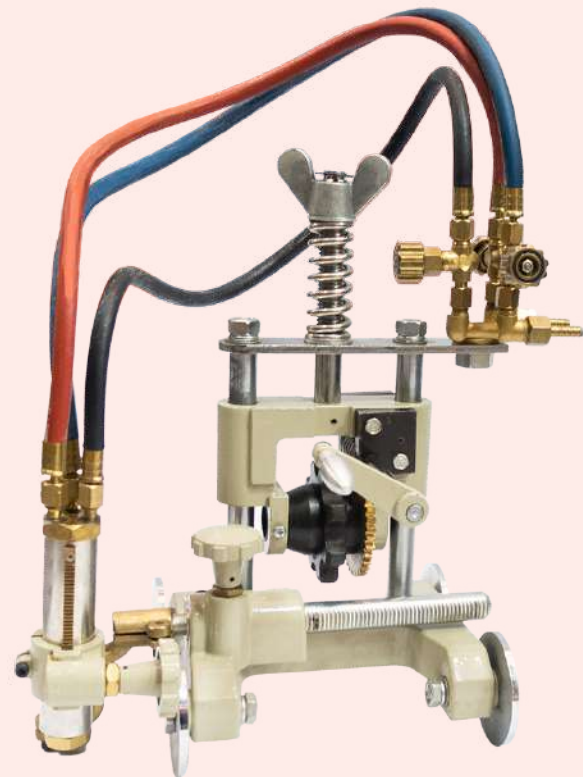
Stock Code	Description
AS01031	Torch head P80
AS01032	Torch P80 6 holes (red shank)
AS01033	Torch P80 4 holes (red shank)
AS01033-1	Electrode PR0070 P80
AS01033-2	Nozzle PD0084-10 (1.0mm) P80
AS01033-3	Nozzle PD0084-13 (1.3mm) P80
AS01033-4	Shield Cup Ceramic P80 (Silver plating)
AS01033-5	Shield Cup Ceramic P80
AS01033-6	Shield Cup P80 Exp
AS01033-7	P80 Standoff Wheel Guide



GAS CUTTING MACHINE

The TG2-11G is a manually operated portable pipe cutting machine with a chain and gear drive system.

The machine will exhibit excellent performance in straight and bevel cutting of all sizes of pipes, which accounts for most of pipe cutting work, being habitually used by many users. Especially compliant for field work without power supply.



Stock Code	AS00632
Model No.	TG2-11G
Weight	8.5kg
Length	410mm
Wheel Width	210mm
Height	410mm
Effective Pipe Cutting Dia.	114-600
Thickness of Pipe Cutting Dia.	50mm
Cutting Shape	I-Shape cutting and V-bevel cutting
Drive System	Manual
Range of Vertical Torch Movement	50mm
Range of Lateral Torch Movement	100mm

- Cuts any size pipe bigger than 100mm(4')
- Ability to cut large pipe diameters (The chain for the maximum dia is 600mm)
- Low gear ration and Control valves
- Graduated bevel collar
- Light-weight and Excellent operability

TG2-11G
GAS CUTTING MACHINE

TG2-11D GAS CUTTING MACHINE



- Cuts any size pipe bigger than 100mm (4')
- Ability to cut large pipe diameters (The chain for the maximum dia is 600mm)
- Driven by motor with shift gear
- Graduated bevel collar
- Light-weight and Excellent operability

The TG2-11D is a portable pipe cutting machine with a chain and gear drive system. The machine will exhibit excellent performance in straight and bevel cutting of all sizes of pipes, which accounts for most of pipe cutting work, being habitually used by many users. This saves working time by using electric power.

Stock Code	AS00636
Model No.	TG2-11D
Weight	16kg
Machine Size	280 x 280 x 450 mm
Power Source	220 ± 10%
Cutting Speed	5-1150mm/min
Cutting Thickness	6-50mm
Cutting Bevel	0-45°
Nozzle	G02 (for Acetylene), G03 (for Propane) #1,#2,#3 Oxygen, Acetylene, LPG
Gas	150-600
Pipe Cutting Dia.	6000rpm, 68W
Motor	Model 70SZ08/A5

TK-12MAX GAS CUTTING MACHINE



- Excellent operability and tractiveforce
- Unrivalled heat-resistance and durability
- Versatility and convertibility—all types of straight line, circle, and bevel cutting
- The well-balanced center gravity ensures stable travelling
- The speed change mechanism is composed of parts designed on the basis of approx. 5000-hour trial loaded operation particulars
- Cutting operation can be started smoothly
- Runs continuously under high temperature

The TK-12 Max is a portable flame cutting machine designed to cut straight lines, circles and bevels with clean sharp, smooth edges providing eight standard variations of cutting attachments. The cutting machine is intended for cutting materials like steelplates etc.

Stock Code	AS00637
Model No.	TK-12MAX
Weight	10kg
Machine Size	440 x 205 x 215 mm
Wheel Distance	160mm
Power Source	AC 42V / 110V / 220V
Reduction Gear	Double Cone System
Cutting Speed	80mm/min -800mm/min (50Hz) 100mm/min-1000mm/min (60Hz)
Cutting Edge Shape	1, V (45°)
Cutting Thickness	5mm-30mm (102 or 106#0,1,2)
Motor	1500rpm/1800rpm (9w/10w)

TG2-150B PROFILING GAS CUTTER



- Moves and positions freely by railway
- Excellent operability and lightness
- Cutting operation can be started smoothly
- Supports various kinds of spare parts

The profiling cutter is a portable flame cutting machine designed to cut square, rectangle, smooth edges providing two standard variations of cutting speed. The cutting machine is intended for cutting materials like steel plates, etc.

Stock Code	AS00638
Model No.	TG2-150B
Power	42 / 110 / 220V AC
Dimension	1190 x 335 x 800 mm
Cutting Thickness	5-100mm
Cutting Speed	50-750mm
Dia. of Circle Cutting	φ 20-600
Length of Line Cutting	1200mm
Max Size of Cutting Square	500 x 500
Max Size of Cutting Rectangle	400 x 900 450 x 750
Weight	61 kg

TG2-600 CIRCULAR GAS CUTTER



- Excellent operability and lightness
- Especially for cutting of circular parts, round hole and flange
- Cutting operation can be started smoothly

The circular cutter TG2-600 is a portable flame cutting machine designed to cut circle parts, round hole and flange, smooth edges while providing two standard variations of cutting speed. The cutting machine is intended for cutting materials like steel plates, etc.

Stock Code	AS00638
Model No.	TG2-150B
Power	42 / 110 / 220V AC
Dimension	Length: 750mm (29") Width: 300mm (12") Height: 700mm (27.5")
Cutting Thickness	6~50mm (0.24~2")
Cutting Speed	0.2-6.0 R/P/min
Dia. of Cutting	30-600mm
Weight	59 kg

MAESTRO



3-IN-1 HANDHELD FIBER LASER MACHINE

Features:

- Versatile - welding/cutting/cleaning, covers most thin sheet metal fabrication needs
- Rapid and cost-efficient welding/cutting/cleaning, little need for further treatments
- Low training requirement
- Small foot print with great mobility & flexibility; extended work perimeter
- Quality laser source with 10x electro-optical conversion efficiency than solid YAG laser



High Energy Efficiency

- CW(continuous wave) laser with 30+% electro-optical conversion efficiency, 10x that of a solid YAG laser



High Usability

- Color touch screen control panel with intuitive user interface
- Comprehensive job parameter settings
- Small foot print, great mobility and flexibility



Easy to use: welding, cutting and cleaning - All at your finger tips

Pump cools the heat generated from the laser torches

100,000 hours of estimated life expectancy



AS00840

3-IN-1 HANDHELD FIBER LASER MACHINE

3-IN-1 HANDHELD FIBER LASER MACHINE

Specifications

Model		WML-15000M	WML-20000M	WML-30000M
Input power supply		1PH AC230 V±5%/50 Hz	1PH AC230 V±5%/50 Hz	3PH AC380 V±5%/50 Hz
Input power		7.2 kW	9 kW	13.5 kW
Center wave length		1080±10 nm	1080±10 nm	1080±10 nm
Electro-optical conversion efficiency		≥30%	≥30%	≥30%
Laser power		1500 W	2000 W	3000 W
Fiber cable length		12 m (9 m ext.)	12 m (9 m ext.)	12 m (8~9 m ext.)
Cooling method		Water cool	Water cool	Water cool
Welding	Scan width	0~5 mm	0~5 mm	0~5 mm
	Welding wire diameter	0.8/1.0/1.2/1.6 mm	0.8/1.0/1.2/1.6 mm	0.8/1.0/1.2/1.6 mm
	Shielding gas	Argon/nitrogen (welding >3 bar)	Argon/nitrogen (welding >3 bar)	Argon/nitrogen (welding >3 bar)
	Welding thickness	0~5 mm	0~5 mm	0~5 mm
	Welding gap range	≤ Welding wire diameter	≤ Welding wire diameter	≤ Welding wire diameter
Cutting	Recommended cutting thickness	3 mm	4 mm	5 mm
	Max cutting thickness	≤5 mm	≤6 mm	≤7 mm
	Shielding gas	Argon, nitrogen, compressed air (>5 bar)	Argon, nitrogen, compressed air (>5 bar)	Argon, nitrogen, compressed air (>5 bar)
Cleaning	Scan width	0~120 mm	0~120 mm	0~120 mm
	Standoff distance	15 cm (F150 focusing lens) 40 cm (F400 focusing lens)	15 cm (F150 focusing lens) 40 cm (F400 focusing lens)	15 cm (F150 focusing lens) 40 cm (F400 focusing lens)
	Max cleaning width	20 mm (F150 focusing lens) 40 mm (F400 focusing lens)	20 mm (F150 focusing lens) 40 mm (F400 focusing lens)	30 mm (F150 focusing lens) 70 mm (F400 focusing lens) 120 mm (F800 focusing lens)
Water tank capacity		13 L	13 L	13 L
Operating temperature		-10°C~40°C; antifreeze needed when ≤7°C	-10°C~40°C; antifreeze needed when ≤7°C	-10°C~40°C; antifreeze needed when ≤7°C
Operating humidity		≤70% at 40°C; ≤90% at 20°C	≤70% at 40°C; ≤90% at 20°C	≤70% at 40°C; ≤90% at 20°C
Power source weight		103 kg	103 kg	149 kg
Packed weight		147 kg	162 kg	187.5 kg
Package weight of wire feeder and accessories		14.7 kg	14.7 kg	14.7 kg
Power source dimensions (mm)		980 x 420 x 710	980 x 420 x 710	1110 x 530 x 1060
Package dimensions (mm)		1060 x 490 x 1470	1060 x 490 x 1470	1220 x 620 x 1135
Package dimensions of wire feeder and accessories (mm)		560 x 250 x 400	560 x 250 x 400	1000 x 320 x 480

3-IN-1 HANDHELD FIBER LASER MACHINE

Comparison between other welding machines

Welding Technology		Arc Welding	Solid YAG Laser	CW Handheld Fiber Laser
Welding Experience	Heat input	High	Low	Low
	Distortion	High	Low	Low
	Weld seam formation	Fillet	Fillet	Variable
	Post weld processing	Yes	Yes	No
	Welding speed	Low	Medium	High
	Ease of use	Low	High	High
Sustainability	Hazard to people	High	Low	Low
	Pollution to Environment	High	High	Low
Cost	Consumables	Electrode / Welding / Wire / Shielding Gas	Crystal, Xenon gas	Shielding gas
	Energy Efficiency	High	Low	High
	Skill requirement	High	Moderate	Low
	Footprint	Small	Large	Small



High Welding Efficiency

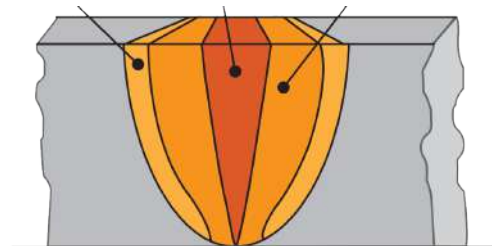
- Up to 10x faster than manual TIG welding
- Very limited spatter thus little post-weld cleaning needed
- Little need for rework thanks to minimal porosity, undercut, or distortion



Cost Efficient

- Low welding skill requirement, save on labor cost for experienced arc welder
- Almost 0 maintenance needed for key component, pump source has over 100k hours life span

TIG Welding Laser MIG Welding



Using laser beam to melt and join metals, this is an emerging manual welding technology that is much more efficient and precise than MIG/TIG with minimal distortion, undercut or burn-through thanks to very limited heat affected zone (HAZ). It delivers excellent welding results with much less costs compared to manual MIG/TIG welding.

As the challenges of metal fabrication industry grow, this new technology can significantly improve fabricators' efficiency and profitability in a competitive landscape where fast project delivery and effective cost control are vital.

3-IN-1 HANDHELD FIBER LASER MACHINE

Comparison between other cleaning machines

Method	Chemical cleaning	Dry ice cleaning	Mechanical grinding	Ultrasound cleaning	Laser cleaning
Environmental hazard	Very high	High	High	Low	Low
Workpiece damage	High probability	High probability	High probability	Low probability	Low probability
Cleaning uniformity	Low	Low	Low	Low	High
Cleaning efficiency	Low	Low	Low	High	High
Precision	Low, non-adjustable	Low, non-adjustable	Low, non-adjustable	Not applicable	High, adjustable
Ease of use	Low	High	High	High	High



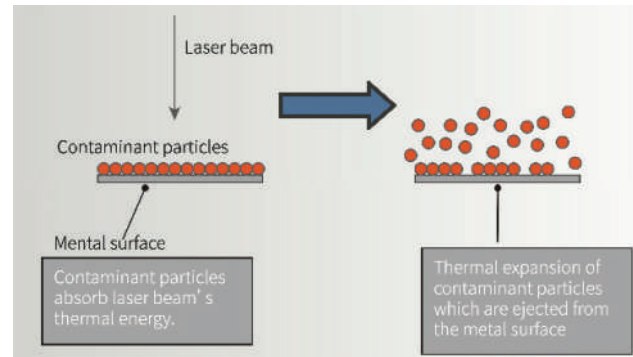
High Cleaning Efficiency

- Cleaning width 300mm, rust cleaning rate 60m²/hour
- Easily cleans hard-to-reach spots, unrestricted by work piece's shape



Cost Efficient

- Non-contact cleaning, no damage to work piece's surface
- Zero consumables needed, low environmental hazard
- Almost zero maintenance needed for key component, pump source has over 100k hours life span



This an emerging manual metal cleaning technology that uses laser beam to "burn off" rust, oil, coating, and other contaminants from a metal surface. In this process, rapid thermal energy transfer takes place between the laser beam and the contaminant, resulting in rapid thermal expansion of the contaminant particles; the particles are then ejected from the metal surface due to the resulting force caused by the rapid thermal expansion.

Also known as Dry Laser Cleaning, it is a highly effective and efficient cleaning process that requires zero consumables and generates limited pollution. Thanks to laser's characteristics, it can also effortlessly clean curvilinear surfaces and hard-to-reach spots.

3-IN-1 HANDHELD FIBER LASER MACHINE PARTS

Wear Parts

Model	Stock Code	Specification
Spring accumulator seal ring	AS00840-1	21mm (outer dia.) x 15mm (inner dia.) x 2.7mm (thickness)
Graded tube	AS00840-2	600-4 /200 focal length
Liner ends	AS00840-3	both ends
Box and nozzles	AS00840-4	AS12 x 2 ,ES12 ,CS12 ,BS16 ,FS16, M8 1.5 ,C, 600-4
Earth clamp and wires	AS00840-5	Cable length 8m

Lens

Model	Stock Code	Specification
Protective lens	AS00840-6	18mm (dia.) x 2mm (thk.)
Reflecting lens and holder	AS00840-7	30mm (dia.) x 4mm T2 (thk.)
Collimating lens	AS00840-8	20mm (dia.) x 5mm (thk.) F60
Focusing Lens	AS00840-9	20mm (dia) x 4.5mm (thk.) F150
Focusing Lens	AS00840-10	20mm (dia.) x 4.5mm (thk) F400

Nozzle

Parts	Stock Code	Wire Diameter (mm)	Joint Type	Remarks
Nozzle AS12	AS00840-11	0.8 / 1.0 / 1.2	All type	Highly recommended for all position welding
Nozzle BS16	AS00840-12	1.2 / 1.6	All type	Highly recommended for all position welding
Nozzle CS12	AS00840-13	0.8 / 1.0 / 1.2	Narrow exterior angle	These nozzles are not easy to operate, usually used by skillful users
Nozzle ES12	AS00840-14	0.8 / 1.0 / 1.2	Wide exterior angle	
Nozzle FS16	AS00840-15	1.2 / 1.6	Wide exterior angle	
Nozzle AS20	AS00840-16	1.2 / 1.6 / 2.0	All type	
Nozzle BS20	AS00840-17	0.8	All type	
Nozzle C	AS00840-18		All type	Highly recommended for all position welding
Cutting Nozzle	AS00840-19			

Liner

Model	Stock Code	Specification
Liner 1.0mm	AS00840-20	5m
Liner 1.6mm	AS00840-21	3m
Liner 1.6mm	AS00840-22	5m
Liner 1.6mm	AS00840-23	8m
Liner 2.0mm	AS00840-24	5m
Graphite liner 1.6mm	AS00840-25	3m
Graphite liner 1.6mm	AS00840-26	5m
Guide tube (Guide liner)	AS00840-27	100mm

3-IN-1 HANDHELD FIBER LASER MACHINE PARTS

Tip

Stock Code	Specification
AS00840-28	0.8mm
AS00840-29	1.0mm
AS00840-30	1.2mm
AS00840-31	1.6mm
AS00840-32	2.0mm
AS00840-33	2.5mm

Feed Roller

Stock Code	Specification
AS00840-34	0.8mm / 1.0mm (V)
AS00840-35	1.2mm / 1.6mm (V)
AS00840-36	2.0mm / 2.5mm (V)
AS00840-37	0.8mm / 1.0mm (U)
AS00840-38	1.2mm / 1.6mm (U)
AS00840-39	2.0mm / 2.5mm (U)

Spare Parts

Kindly check with supplier for spare parts

Description	
Main machine screen	Power switch
Wire feeder screen	Line bank
Control cable between torch and control box	Grounding bar
Torch head	Input power cable
Control box	4-pin socket and wires
Gas connector	2-pin socket and wires
Wire feeder	Bracket for power switch
Power supply board	Button cover 100-2
Safety goggles	Motor cover: with screws
Safety goggles (CE)	Tension plate 100-1: with screws
Cable of screen	Focusing lens cover 300-1: with screws
Box of nozzles	Focusing lens holder
Fan for control box	Protective lens holder 300-1: with screws
Torch button	Protective lens holder 300-4: with screws
Wire feeder main board	Sealing ring 18.5 x 20.5 x 1.7
Wire feeder motor	Focusing lens pressing ring 300-3
Earth clamp and wire	Protective lens pressing ring 300-5
Box and nozzles	Collet holder 600: with screw
Cable clamp	Connection block 600-1
Solenoid vale	Collect 600-3
Rotary switch	Bolt 600-2
Power switch	Insulation plate 500
Pressure switch	QBG connector
Relay	Aviation plug 2-pin or 4-pin female
E.Stop switch	Capacitor 35uf or 40uf for cooler
Gas inlet connector	Compressor for cooler
Gas quick connector	Fan for cooler
3-way connector	Pump
AC conductor	Chiller controller
Buzzer	Stainless steel heating rod

WELDING ACCESSORIES & VENTILATION



71T-1 FLUX CORED WIRE

CLASSIFICATIONS Weld Metal:

SFA/AWS A5.20 E71T-1C
 SFA/AWS A5.36 E71T1-C1A0-CS1
 EN ISO 17632-A T422 P C11 H10

Welding Position: All positions
 Type of Current: DCEP
 GAS: C1 (EN ISO 14175)

Stock Code: **AS01706-W**



Features & Applications:

A multi-purpose all positional rutile cored wire for use with CO₂ shielding gas. It is widely used in mild steel and 490 MPa grade steel.

Chemical Composition of Deposited Metal (%)

	C	Mn	Si	S	P
Standard	≤0.12	≤1.75	≤0.90	≤0.03	≤0.03
Typical	0.055	1.35	0.40	0.009	0.018

Mechanical Properties of Deposited Metal (AW)

		Tensile Strength Rm (Mpa)	Elongation A4 (%)	Impact Value (J)		Shield Gas CO ₂
				-20°C	-30°C	
Standard	≥	490-660	≥22	-	≥27	purity ≥ 99.98%
Typical		535	32	120	110	

Diffusible hydrogen in deposited metal: ≥10ml/100g (mercury process)
 X-ray radiographic inspection: Grade I

Size & Recommended Current (DC*)

Diameter (mm)		1.2	1.4	1.6
Current (A)	F	120-300	150-380	180-430
	HF	120-280	150-320	180-380
	V.OH	120-260	150-270	180-280
	H	120-280	150-320	180-330
	VD	200-280	220-300	250-300

Notice:

1. The flow rate of shield gas should be within 20L - 25L/min in welding.
2. The wire extension should be 15mm-25mm.
3. The surfaces to be welded must be clean from impurities, oil contamination, rust, moisture and so on.
4. The welding conditions mentioned act as reference only. It is recommended to do a welding procedure qualification according to the project before putting it into formal welding.

This product has been approved by CCS. ABS. DNV • GL. LR. BV. NK. KR. RINA, RS for 3YSH5. This certifies the compliance standards of this product.

WELDING CABLE



Applications:

Welding cable is used to transmit high current between hand electrode and the welding apparatus. Suitable for flexible use under rough conditions, on assembly lines & conveyor systems, in machine tool and motor car manufacturing, ship building, for manually and automatically operated line & spot welding. This cable maintains its high flexibility even when exposed to gas, ozone, light, oil, etc.

Construction:

Conductors	Annealed flexible stranded pure copper class 5 to EN 60228
Separator	A transparent polyester tape is applied between copper and insulation
Jacket	Black, chlorinated polyethylene rubber (CPE) EMS in according to EN 50363-2-1
Reference Standards	EN 60228, EN 50363-1, EN 50363-2-1, IEC 60332-1-2, DIN EN 50525-2-81
Approval	VDE, CE, CPR-Eca

Features:

- Maximum conductor operating temperature +85 deg C
- Maximum conductor temperature during short circuit +250 deg C
- Lowest ambient temperature for fixed installation -35 deg C
- Lowest ambient temperature for outdoor installation -20 deg C
- Bending radius: 4D for fixed installation, 8D for outdoor installation



Stock Code	Size	Conductor Strands	Jacket Thickness		Nominal O.D	Approx. Cable	At 20 Deg C Max Conductor Res	Current carrying capacities 85 deg C		Length
	mm ²	# x wire dia.	Nominal (mm)	Min. (mm)	(mm)	(kg/km)	(ohm/km)	Continuous Load (A)	Intermittent Load (A)	M/Roll
AS00125	1 x 35	1035 x 0.20	2.0	1.6	8.2 ± 0.4	397	0.554	180	250	100
AS00113	1 x 50	1480 x 0.20	2.2	1.8	13.8 ± 0.7	553	0.386	210	320	100
AS00114	1 x 70	2060 x 0.20	2.4	1.9	15.9 ± 0.8	753	0.272	270	400	100
AS00115	1 x 95	2738 x 0.20	2.6	2.1	17.9 ± 0.9	983	9.206	330	500	100

WELDING ACCESSORIES



CUTTING TORCH

Stock Code	AS00140
Model	Type 250
Torch length	490 mm
Cutting thickness	250 mm
Weight	1.1 kg
Head angle	90°
Cutting nozzles	ANME (Acetylene) / PNME (Propane)
Gas	Acetylene / Propane



CUTTING TORCH

Stock Code	AS00371
Model	Type 200
Torch length	460 mm
Cutting thickness	200 mm
Weight	0.8 kg
Head angle	90°
Cutting nozzles	ANME (Acetylene) / PNME (Propane)
Gas	Acetylene / Propane



HEATING TORCH

Stock Code	Model
AS00150	Type 2



WELDING TORCH

Stock Code	Model
AS00145	Type 6
AS00146	Weld Master



**WELDING TORCH SET
TYPE23
AS00152**

Package Includes:

- Torch handle x 1
- Cutting nozzle x 1
- Welding Nozzle x 3
- Check Valve x 2
- Tip Cleaner x 1
- Green (ox) Welding Hose x 1
- Red(ac) Welding Hose x1
- Oxygen Regulator x1
- Acetylene Regulator x 1
- Wrench x 1
- Carrying case x 1



**WELDING & CUTTING SET
TYPE21
AS00153**

Package Includes:

- Medium Duty Torch x 1
- Welding Set x 1
- Heating Set x 1
- Oxygen regulator
- Acetylene regulator
- Wrench x 1
- Carrying case x 1

WELDING ACCESSORIES



ANME CUTTING NOZZLES

Stock Code	Size
AS00194	1/32"
AS00195	3/64"
AS00196	1/16"
AS00197	5/64"
AS00198	3/32"
AS00199	7/64"
AS00200	1/8"



PNME CUTTING NOZZLES

Stock Code	Size
AS00201	1/32" - 9 Lines
AS00380	1/32" - 18 Lines
AS00202	3/64" - 9 Lines
AS00381	3/64" - 18 Lines
AS00203	1/16" - 9 Lines
AS00382	1/16" - 18 Lines
AS00204	5/64" - 9 Lines
AS00383	5/64" - 18 Lines
AS00205	3/32" - 9 Lines
AS00384	3/32" - 18 Lines
AS00206	7/64" - 9 Lines
AS00385	7/64" - 18 Lines
AS00207	1/8" - 9 Lines
AS00386	1/8" - 18 Lines



GOUGING ROD

Stock Code	Size (mm)	Current Range (A)	Metal Removal Rate (g/100mm)
AS00091	4mm x 305	100-150	41
AS00092	5mm x 305	150-200	81
AS00093	6.5mm x 305	350-400	120
AS00094	8mm x 305	450-500	219
AS00095	9.5mm x 305	550-600	306



GOUGING TORCH

Stock Code	Model No.
AS00171	400AMP
AS00172	600AMP



300AMP ELECTRODE HOLDER
AS00169



500AMP ELECTRODE HOLDER #8575
AS00168



ELECTRODE HOLDER WSA-300AMP
AS00900



ELECTRODE HOLDER WSA-500AMP
AS00904



EARTH CLAMP

Stock Code	Model
AS00190	300 AMP
AS00191	400 AMP
AS00192	500 AMP



G TYPE GROUND CLAMP

Stock Code	Model
AS00193	300 AMP
AS00554	500 AMP



DRYING ELECTRODE OVEN WITH DIGITAL CONTROL



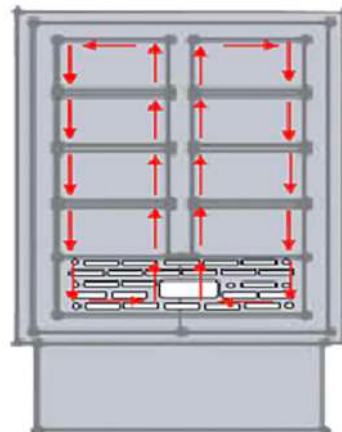
Specifications:

- Holding temperature: 150°C
- Re-baking temperature: 300°C - 400°C (for 2 - 4 hours)
- External EG mild steel casing with epoxy
- Internal Fully stainless steel (Iron free)
- High quality and durable holding, re-baking, and reconditioning electrode oven with a mild steel casing to make a requirement for all certification of calibration

Stock Code	AS02000	AS02001
Model	WM50MS	WM100MS
Capacity	50 kg	100 kg
Electrode length	457mm	457mm
Temperature	0°C - 400°C	0°C - 400°C
Average stabilized	Digital control	Digital control
Input voltage	240V AC	240V AC
Electrode size	10", 12", 14", 18" (254, 305, 356, 457 mm)	10", 12", 14", 18" (254, 305, 356, 457 mm)
Heating element	1000watts (2)	1000watts (2)
Insulation (rock fiber wool)	2" (50mm)	2" (50m)
Shelved compartment	6	6
Inside diameter L x W x H	480 x 310 x 288 mm	480 x 310 x 386 mm
Outside diameter L x W x H	580 x 420 x 541 mm	580 x 420 x 639 mm
Nett weight	34 kg	40 kg

Features:

- Removable shelving for use with flux and wire coils
- Rectangle shape distributes heat by convection for even-heat distribution
- Drive off moisture and get good welds
- Guard against rejects
- Eliminate rework
- Protect welding workds



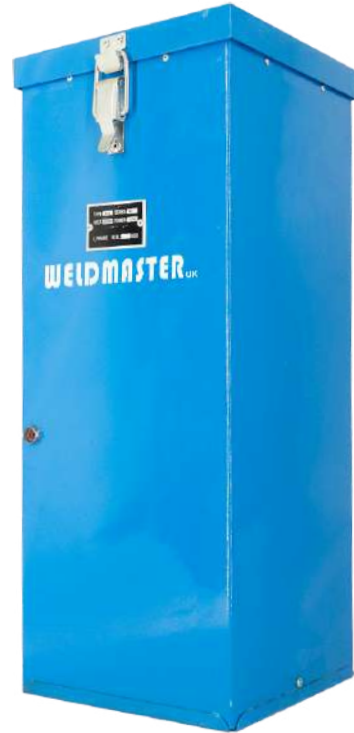
A chimney effect that drives air upward along the center support bar, together with the oven's rectangle shape and vented shelving, allows for exceptional heat flow patterns



ELECTRODE OVEN



K-15



K-50

Stock Code	AS00264	AS00265
Model	K-15	K-50
Electrode Capacity	15lbs 18" Rods	50lbs 18" Rods
Volts	120V / 240V AC/DC	120V / 240V AC/DC
Watts	150W / 150W	150W/150W
Thermostats	Factory Preset /Field Adjustable	Factory Preset /Field Adjustable
Temperature	Preset 275°F (135°C) Range 100° - 300°F (50° -150°C)	Preset 275°F (135°C) Range 100° - 300°F (50° -150°C)
Dimensions	3.3"D x 19"H (8.38cm x 48.26cm)	1" (2.54cm) T.I.W. 6" x 18.5" x 6" x 19" (15.24cm x 18.5cm x 15.24cm x 48.26cm)
Insulation	1" Thermal Insulation Wool	1" Thermal Insulation Wool
Net Weight	13 lbs 5.9 kg	18 lbs 8.16 kg

ELECTRODE CONTAINER



WIRE TYPE

Stock Code	AS00255	AS00257
Rod Length (mm)	450	750
Rod Weight (kg)	5	10
Capacity (W)	200	300
Ø x over all height (mm)	180 Ø x 600H	180 Ø x 850H
Weight (kg)	3	7
Remarks	Upright	Inclined
Temperature	70°C	



TEMPERATURE CONTROL TYPE

Stock Code	AS00256	AS00258
Rod Length (mm)	450	750
Rod Weight (kg)	5	10
Capacity (W)	200	300
Ø x over all height (mm)	180 Ø x 600H	180 Ø x 850H
Weight (kg)	3	7
Remarks	Upright	Inclined
Temperature	70°C	



MAGNET TYPE

Stock Code	AS00259	AS00260
Rod Length (mm)	550	750
Rod Weight (kg)	5	10
Capacity (W)	600/80	800/80
Ø x over all height (mm)	230 Ø x 735H	230 Ø x 835H
Weight (kg)	7	11
Remarks	Level-raising base	Inclined, with 50mm level - raising
Temperature	70°C	

WELDING ACCESSORIES



WELDING HEAD SHIELD
AS00217



WELDING HANDS SHIELD
AS00218



**70mm² INTERCONN CABLE SET
C/W CABLE COVER FOR MIG 500**

WATER COOLED

Stock Code	Size
AS00828-W	15M
AS00830-W	30M

AIR COOLED

Stock Code	Size
AS00828	15M
AS00827	25M
AS00830	30M



WELDING HEAD SHIELD FOR SAFETY
AS00262



WELDING GLOVES
AM00230



CABLE COVER FOR INTERCONN SET

Stock Code	Size
AS00921	8M



TROLLEY

Stock Code	Model
AS00826	MIG 500 with drawer
AS00824-E	TIG 400



TUNGSTEN ELECTRODE

Stock Code	Size	PCS	Model
AS00694	2.4 X 150mm	10	RED



WIRE FEEDING ROLLER

Stock Code	Model
AS00940-50	PressureRoll 1.0-1.3 mm (General)
AS00940-51	Pressure Roll 1.2-1.6 mm (General)
AS00940-52	Wire Feed Roll 1.0-1.2 mm (U Groove)
AS00940-53	Wire Feed Roll 0.8-1.0 mm (V Groove)
AS00940-54	Wire Feed Roll 1.0-1.2 mm (V Groove)
AS00940-55	Wire Feed Roll 1.2-1.6 mm (K Groove)



FEMALE RECEPTACLE

Stock Code	Size
AS00941	35 - 50 mm ²
AS00942	70 - 95 mm ²

AUTO DARKENING WELDING HELMET



AUTO DARKENING WELDING HELMET
AS03991



Quick and intuitive auto darkening feature

Acclaimed safety feature

The auto-darkening welding helmet is specifically created to shield the welder's eyes against dangerous radiation such as visible light, ultraviolet rays, and infrared rays that are produced during specific arc and gas welding procedures. Appropriate for welding, cutting, & grinding.

Stock Code	AS03991
Model No.	WM-E723A
Dimensions	124.5mm x 100.5mm x 18mm
Viewing area	98mm x 55mm
Shade	DIN 4-9 / 9-13
Dark state shade adjustment	External control, stepless
Sensitivity control	External control, Stepless
Power supply	Lithium Battery/Solar
Battery	1200mAh (replaceable)
Sensor Quantity	4
Mask Material	PP
UV/R Protection	DIN 16

**Compliant with European standards and American standards*

Optional Accessories:

Stock Code	Description
AS03991-1	INNER PROTECTIVE LENS FOR WM-E723A
AS03991-2	OUTER PROTECTIVE LENS FOR WM-E723A
AS03991-3	BATTERY CR2450 FOR WM-E723A
AS03991-4	HELMET ADAPTOR FOR WM-E723A



HELMET ADAPTOR FOR SAFETY HELMET WM-E723A
AS03991-4

WELDING ACCESSORIES



**FIN TYPE CO2
REGULATOR**
AS00829



**R-11 ARGON
REGULATOR**
AS00162



**CARBON DIOXIDE
REGULATOR**
AS00166



**ARGON
FLOWMETER**
AS00163



**OXYGEN
REGULATOR**
AS00155



**ACTYLENE
REGULATOR**
AS00159



**NITROGEN
REGULATOR**
AS00164



**LPG
REGULATOR**
AS00165WELD



**OXYGEN
TWIN OUTLET VALVE**
AS00208



**ACETYLENE TWIN
OUTLET VALVE**
AS00209



**OXYGEN FLASH
BACK ARRESTOR
FOR TORCH**
AS00175



**ACETYLENE FLASH
BACK ARRESTOR
FOR TORCH**
AS00179



**OXYGEN FLASH
BACK ARRESTOR
FOR HOSE**
AS00372



**ACETYLENE FLASH
BACK ARRESTOR
FOR HOSE**
AS00373



**OXYGEN FLASH
BACK ARRESTOR
FOR REGULATOR**
AS00184



**ACETYLENE FLASH
BACK ARRESTOR
FOR REGULATOR**
AS00188

WELDING ACCESSORIES

HOSE COUPLER



Stock Code	Size
AS00395	5/8" - 19T x 9/16" - 18T
AS00396	9/16" - 18T x 5/8" - 18T

LH/RH HOSE COUPLER



Stock Code	Size
AS00389 (RH) AS00390 (LH)	9/16" x 9/16"

3C HP-659-1 HOSE END COUPLER



Stock Code	Size
AS00397	3/4" X 3/4"-14T LH

LH/RH HOSE COUPLER



Stock Code	Size
AS00397 (LH) AS00398 (RH)	3/4" - 14T x 3/4" - 14T

3D HP-659-1 HOSE END COUPLER



Stock Code	Size
AS00398	3/4" X 3/4"-14T RH

NUT & HOSE NIPPLE



Stock Code	Size
AS00387 (LH) AS00388 (RH)	3/8" BSP x 1/4" RH

(L/R) BRASS CONNECTOR



Stock Code	Size
AS00399	3/4" X 3/4"-14T(L/R)

PIN TYPE CABLE CONNECTOR



Stock Code	Model
AS00210	300 AMP
AS00211	500 AMP

BRASS CONNECTOR



Stock Code	Size
AS00695	3/4" X 3/4"-14T

SCREW TYPE CABLE CONNECTOR



Stock Code	Model
AS00212	300 AMP
AS00213	500 AMP

LH/RH BRASS HOSE ADAPTOR



Stock Code	Size
AS00697 (LH) AS00696 (RH)	1/4" X 5/16"

AMERICAN TYPE CABLE CONNECTOR



Stock Code	Model
AS00351	500 AMP

HD STEEL HOSE END CONNECTOR



Stock Code	Size
AS00700	2"

DKW CABLE CONNECTOR



Stock Code	Size
AS00903	35 - 50mm ² (300A)
AS00917	70 - 95mm ² (500A)

BRITISH TYPE HOSE CHECK VALVE



Stock Code	Size
AS00391 (LH) AS00392 (RH)	3/8" BSP X 1/4" (LH/RH)

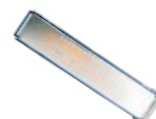


NOZZLE CLEANER SET TYPE AS00226

USA TYPE HOSE CHECK VALVE



Stock Code	Size
AS00697 (LH) AS00696 (RH)	9/16" X 1/4" (LH/RH)



NOZZLE CLEANER BOX TYPE AS00227

WELDING ACCESSORIES



FIBERGLASS CLOTH

Stock Code	AS00250
Model	#3000
Density	1600g/m ²
Temperature	550°C
Resistance Capability	Max continuously
Weave Type	Plain
Colour	White
Finish	Texturised
Thickness	3.0mm
Width	1.0m
Roll Length	15m



FIBERGLASS CLOTH

Stock Code	AS00248	AS00249
Model	HT800	#1700
Density	1650g/m ²	1110g/m ²
Temperature	550°C	550°C
Resistance Capability	Max continuously	
Weave Type	Satin	Plain
Colour	Golden Brown	Golden Brown
Finish	Heat Treated	Texturised
Thickness	1.0mm	1.7mm
Width	1.0m	1.0m
Roll Length	50m	30m



FIBREGLASS TAPE

Stock Code	Size
AS00374	2" x 3mm x 30m



FIRE BLANKET

Stock Code	Size
AN00609	1.2 X 1.8 m



OXYGEN KEY AS00225



3 FLINT SPARK LIGHTER

Stock Code	Model
AS00223	Triple



FLINT STONE FOR 3FLINT SPARK LIGHTER

Stock Code	Model
AS00224	Stone



ROCK SPARK GUN

Stock Code	Model
AS00221	Red



WELDING FIXER

Stock Code	Size
AS00400	3"
AS00401	4"
AS00588	5"
AS00589	6"



CABLE LUG

Stock Code	Model
AS00214	300 AMP
AS00215	400 AMP
AS00216	500 AMP



WELDING CLEAR GLASS

Stock Code	Size
AS00229	2" X 4"



WELDING DARK GLASS

Stock Code	Model	Size
AS00228	#10	2" X 4"
AS00342	#11	2" X 4"
AS00343	#12	2" X 4"
AS00344	#13	2" X 4"
TS00037	#14	2" X 4"



WELDING GOGGLE-FRONT LIFT AS00219



SPARE VISOR FOR FACE SHEILD AN00913

SUPER HIGH PRESSURE ALPHA AIR HOSE



COMPRESSED AIR HOSE

Application

- Heavy duty service for quarrying, over ground and underground working
- Compressed air tools or compressors, industrial applications
- Metallurgical industry, shipyards, petrol stations and garages, civil engineering and construction

Features

- Light and soft to handle
- Excellent weather, pressure, and elasticity resistance
- Cover & Tube : Inside wall black, outside wall black with polyester yarn
- Resistant to traces of oil, insecticides and weed killers
 - Internally & Externally smooth
 - Reinforcement : Synthetic fibers
- Resistant to Ozone, weather UV, & Abrasion
- Highly Flexible, Robust, No Kink
 - Temperature Range : - 20°C (-4°F) to 60°C (140°F)
- Manufacturing standard conformance : ISO 2398
- Black colour, corrugated
- Made in Korea

Stock Code	I.D. (Inch)	I.D. (mm)	O.D. (mm)	Length (M)	Working/Burst Pressure at 20°C (Bar)	Working Pressure at 20°C (PSI)
AF00096	3/8"	10	16	100	W.P 20 / B.P 80	510
AF00096-50	3/8"	10	16	50	W.P 20 / B.P 80	510
AF00097	1/2"	13	20	100	W.P 20 / B.P 80	360
AF00097-50	1/2"	13	20	50	W.P 20 / B.P 80	360
AF00098	3/4"	19	27	100	W.P 20 / B.P 80	360
AF00098-50	3/4"	19	27	50	W.P 20 / B.P 80	360
AF00099	1"	25	34	100	W.P 20 / B.P 80	290
AF00099-50	1"	25	34	50	W.P 20 / B.P 80	290

TWIN HOSE



TWIN HOSE

Features

- Light and easy to handle
- Constructed of two attached hoses
- Excellent weather, abrasion, and cold temperature resistance
- Temperature Range : - 20°C (-4°F) to 60°C (140°F)
- Cover & Tube : Inside wall black, outside wall blue color& Red colour with polyester yarn
- Internally & Externally smooth
- Reinforcement : Synthetic fibers
- Manufacturing Standard conformance: EN 1327
- Made in Korea

Application

Gas hose for welding machines and cutting devices, civil construction, and painting

- Transport of Oxygen / Acetylene
- Installation and heating system
- Shipyards, for construction of bridges
- Steel and Car body construction
- Over and Underground working
- Welding shops and at manufacturers of welding apparatus

Twin Welding Hose - Compound finish blue + red with inner black

Stock Code	I.D. (Inch)	I.D. (mm)	O.D. (mm)	Length Per Roll (M)	Working Pressure (PSI)	Burst Pressure (PSI)
AF00088	1/4"	6	13	100	400	1700
AF00089	1/4"	6	13	50	400	1700
AF00090	1/4"	6	13	30	400	1700



JUMBO AXIAL FAN



CE

Features

- Standard IP44 – Able to withstand rain and suitable for outdoor usage
- More quiet than conventional fans make it suitable for indoor usage
- Large airflow rates at low pressures
- 12-Blades Design
- Heavy duty die-cast aluminum alloy impeller & blades
- Suitable for industrial pipeline pressurization (Blower can be connected in series to increase transmission length), air delivery & roof ventilation
- Our Weldmaster Jumbo Blowers comes with **Schneider brand motor starter** offering added protection from electrical surges.

AS00750

AP-800 JUMBO AXIAL FAN



JUMBO AXIAL FAN

Applications

Construction Sites, Tunnels, Carpark basement

Generally used for cooling applications

- Process cooling in systems or machinery
- Spot cooling of transformers and generators and industrial equipment
- Ventilation in warehouses, factories, foundries, laundries, garages, equipment rooms, and engines,
- Suitable for Heat stroke prevention, cooling down & ventilation in Industrial & Mining enterprise, civil buildings.
- Tunnel Ventilation
- Cooling work areas where heat is produced

Removing toxic gases and fumes

- Paint spray booths / Welding booths

Optional Add-Ons

- 5m/10m Ventilation Hose
- Customize with Ducting & Elbow



Exclusive sizes available

Engineer's #1 choice for Singapore's Tunnel construction projects

Stock Code	AS00750	AS00753	AS00704	AS00751
Model	AP-800	AP-900	AP-1000	AP-1100
Size	800mm 32"	900mm 36"	1000mm 40"	1100mm 44"
Voltage	415 - 440 V	415 - 440 V	415 - 440 V	415 - 440 V
Frequency	50 Hz	50 Hz	50 Hz	50 Hz
Power	7.5 kW	7.5 kW	11 kW	11 kW
Revolution	1450 RPM	1450 RPM	1450 RPM	960 RPM
Air Volume	33180 m ³ /h	41030 m ³ /h	46950 m ³ /h	66950 m ³ /h
Pressure	398 Pa	415 Pa	490 Pa	520 Pa
Phase	3-Phase	3-Phase	3-Phase	3-Phase
Sound Level	89	91	95	93
Dimension	970 x 640 x 1105 mm	1080 x 690 x 1215 mm	1160 x 780 x 1315 mm	1270 x 855 x 1410 mm
Weight	135 kg	185 kg	233 kg	300 kg

PORTABLE FAN



AP-2
200MM/8" PORTABLE FAN

Weldmaster Portable Fans are made from durable and firm structure with good insulation.

Features

- Large fan blades generate greater air flow for high air volume and efficiency
- Removes odour and fumes efficiently and effectively, which is ideal for welding works, tunnels, basements, chemical laboratories, etc
- Capability to connect up to 125 ft (38 m) of straight air duct
- AS00624 & AS00625 Option motor voltage: 110V or 230V
- AS00627 available in 230V only

Stock Code	Model	Size	Power	Max RPM	Phase	Max Rated	Sound Level dB(A)
AS00624	AP-2	200mm/8"	1/4HP / 50Hz / 60Hz	2800 RPM	Single	25m ³ /min	63
AS00625	AP-3	300mm/12"	1/4HP / 50Hz / 60Hz	2800 RPM	Single	63m ³ /min	71
AS00627	AP-4	350mm/14"	1/4HP / 50Hz / 60Hz	2800 RPM	Single	82m ³ /m	76

JUMBO AXIAL FAN



AP-5
AP-6



AP-7

Features

- Adjustable Fan Angles
- Built in wheels for movable operation
- Aluminium blades built within metal frame provides durability generating higher air flow for high air volume and efficiency
- Removes odour and fumes efficiently and effectively, which is ideal for welding works, tunnels, basements, chemical laboratories, etc
- Capability to connect up to 125 ft (38 m) of straight air duct.
- For industrial ventilation needs as it provides higher airflow and delivers fresh air supply.

Stock Code	Model	Size	Power	Max RPM	Phase	Max Rated	Sound Level dB(A)	Max Pressure (pa)
AS00628	AP-5	400mm/16"	2.0HP / 230V / 50Hz	2800 RPM	Single	96m ³ /min	102	700
AS00629	AP-6	500mm/20"	2.2HP / 230V / 50Hz	2800 RPM	Single	162m ³ /min	109	972
AS00630	AP-6	500mm/20"	2.2HP / 415V / 50Hz	2800 RPM	3 Phase	162m ³ /min	109	972
AS00623	AP-7	600mm/24"	3.0HP / 230V / 50Hz	1400 RPM	Single	290m ³ /min	113	280
AS00631	AP-7	600mm/24"	3.0HP / 415V / 50Hz	1400 RPM	3 Phase	290m ³ /min	133	280

PNEUMATIC BLOWER



PNEUMATIC BLOWER
AET-PF300 / AET-PF400



PNEUMATIC BLOWER
AET-PF500 / AET-PF600

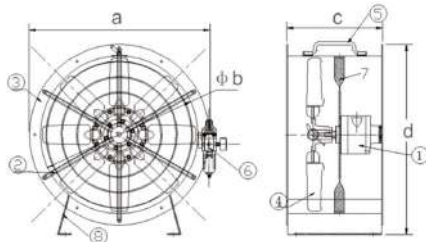
Operating Points

- The maximum pressure of compressed air should not exceed 0.7mpa.
- The operating temperature of the standard model is 30°C to 65°C.

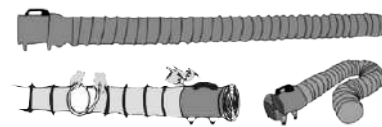
Explosion Proof - EX CII T6 GB

Stock Code	AS00714	AS00701	AS00715	AS00702
Model	AET-PF300	AET-PF400	AET-PF500	AET-PF600
Diameter	300mm	400mm	500mm	600mm
Working Air Pressure	0.6Mpa	0.6Mpa	0.6Mpa	0.6Mpa
Air Volume	3800m ³ /h	4800m ³ /h	8000m ³ /h	9500m ³ /h
Speed	3000rpm/min			
Air Consumption	0.85m ³ /min	0.85m ³ /min	2.2m ³ /min	2.2m ³ /min
a (mm)	370	465	560	660
b (mm)	310	410	510	610
c (mm)	245	330	340	465
d (mm)	395	500	600	710

All parameters in the above table are measured at the compressed air pressure of 6.2 bar



S.N	Par
1	Air Motor
2	Mesh Cover
3	Housing
4	Wind Leaf
5	Handle
6	Air Line Filter
7	Fixed Flange
8	Bottom Foot



Lubrication

We recommend special oil for pneumatic tools (viscosity of about 30); CASROL QWS, SHELL TELIUS 32 MOBIL OILDTE 24, BP EN- ERGOL HLP 32. Please select and adjust the lubricator according to the following formula:

L = air consumption (L/s)
D = drops per minute (1 drop=15 mm³) L*0.2 = D

VENTILATION HOSE

Easily fitted extensions can extend the duct. Simply slip the extension over the ring on the end off the duct and securely tie the cord.

Stock Code	Par	Length (m)	Stock Code	Par	Length (m)
AS00016	200mm/8"	5	AS00124	250mm/10"	10
AS00017	300mm/12"	5	AS00367	300mm/12"	10
AS00018	350mm/14"	5	AS00368	400mm/16"	10
AS00019	400mm/16"	5	AS00369	500mm/20"	10
AS00020	500mm/20"	5	AS00370	600mm/24"	10
AS00021	600mm/24"	5	AS00566	800mm/32"	10
AS00565	800mm/32"	5	AS00574	900mm/36"	10
AS00366	200mm/8"	5	AS00575	1000mm/40"	10



14"
VENTILATION HOSE
AS00018



Connection Flexible Duct
Easily fitted extensions can extend the duct. Simply slip the extension over the ring on the end of the duct and securely tie the cord
*SGS fire retardant certified

 **WELDMASTER**